

LANSA Client

Desktop query builder and reporting tool

LANSA Client gives business users access to enterprise data on Windows and IBM i servers. Query, report, and analyze data from a single tool with unparalleled ease-of-use via a graphical user interface. Copy data to popular spreadsheets or other tools for extended analysis. Dramatically reduce the application development backlog by empowering users with the tools to create their own reports.

Easy to use

Using LANS Client, business users to create their own queries with drag-and-drop ease. Users choose the files they wish to interrogate, nominate the fields needed for the report and execute the query. There is no need to learn SQL to build the queries and filter the data for the query result data.

Queries can be linked so that the result data from the first query becomes the input for the next query. Linking queries in this way simplifies query design and provides more flexibility for analyzing the data.

LANSA Client displays query result data as rows and columns in a data grid, in graphical views such as pie charts and bar graphs and can print the results as a report. Users can also copy the query result data into Microsoft Office products (such as Excel) for use in extended analysis or inclusion into other reporting tools.

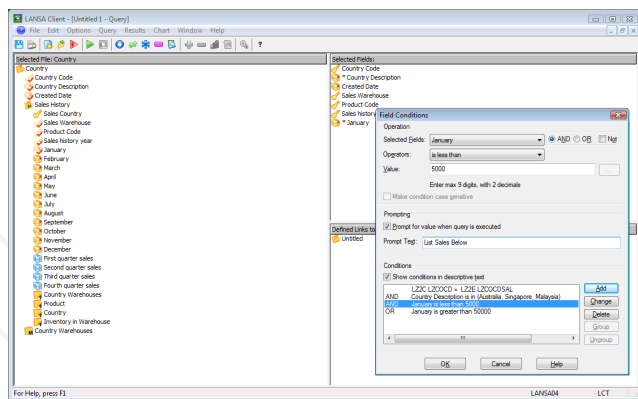
Queries can be saved for repeated use, for example monthly sales figures for a particular product. The query can include promptable parameters, such as a date range. When the query runs, it will prompt the user for the date range and use this range to filter the data for the report.

The point-and-click application generation facility will package multiple queries and reports into a single application. The application can be deployed as an icon on the desktop. Users simply click the icon, fill out the selection prompts and then run the report. The report can be printed, sent by email or pasted into Microsoft Office products.

LANSA Client also supports saving query result data to standard file formats including Microsoft Access, dBase, Microsoft Excel and tab or comma delimited ASCII text files.

Server based supervision

Defining and controlling query access in the LANS Meta Data Repository centralizes the configuration and definition information. Fields have realistic names that business users recognize and understand. The



Using the LANS Client query builder, users create their own queries to analyze data with drag-and-drop ease.

repository holds the rules for navigating between files, making it easy for users to find the data they need. The authorization rules manage access to the data so that users will be able to work with only data they are allowed to use.

Other LANS applications can also use the definitions in the LANS Meta Data Repository – saving time and decreasing the application maintenance effort.

Repository enrichment

The LANS Meta Data Repository provides users with a friendly „mask“ over the actual database and centralized database access using LANS's fast data services layer. This allows administrators (and power users) to enhance the database, without the need for data duplication and without the need to change the actual file definitions. You can enrich the database, without having to change or recompile other programs that access the same data.

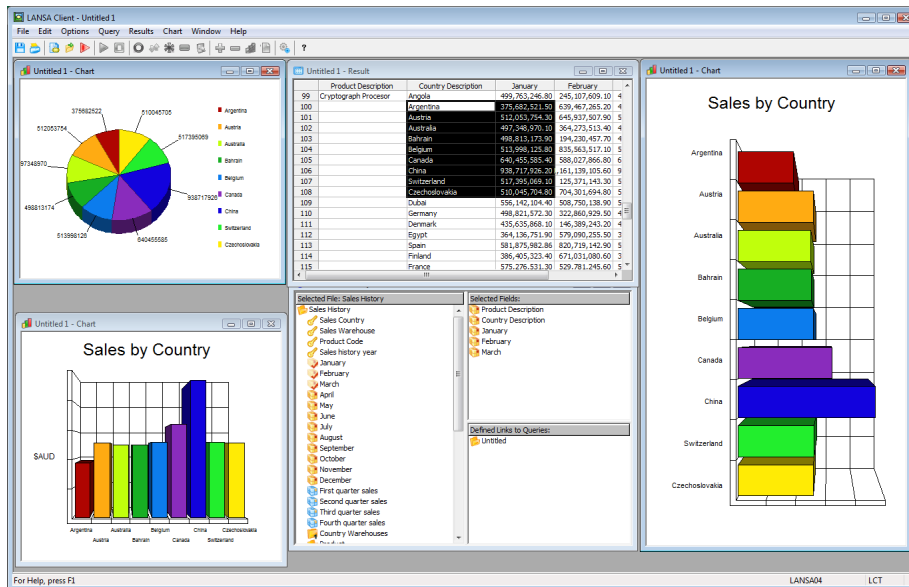
Examples of enrichment include:

- Adding virtual fields (or formula fields), for calculations and other information that can be derived from fields in the same file or linked files. Both LANS Client and server based systems can access these virtual fields through LANS's data service layer, ensuring consistency between operational reports, queries, spreadsheets and other reports.
- Defining rules for navigating between files, so that business users know how to join files. The predefined access routes remove the risk of rogue queries bringing down the server.
- Fields and files that have cryptic „computer names“ can be given user friendly labels. LANS Client gives you the choice to use either original names or friendly labels and can display them both at the same time. Both technical IT professionals and business users can have their „preferred view“ over the same data. Using LANS's multi-lingual facility, you can provide labels in multiple languages or use this facility to cater for departmental terminology
- Field level help text serves as meta-data to describe the role and content of the fields to provide users with a better understanding of the data.

Integrate query results with third party reporting tools

LANSA Client uses dynamic data grouping and summarizing to produce the query result data. Saving the query result data as a Microsoft Access database allows you to integrate it with third party reporting tools.

Third party reporting tools provide extended reporting capabilities – examples are pivot tables, expert report wizards, multi-section reports, mail merge and publishing reports to the Web. Any reporting tools that can read Microsoft Access databases can be used, such as Crystal Reports and Microsoft SQL Server Reporting Services.



LANS Client allows dynamic grouping and summarizing of data.

Features

Query

- Auto-navigate multiple files
- Business names for fields and files
- Dynamic data grouping and summary
- Easy drill-down to related files
- Linked queries
- Multiple filter conditions can be joined by Boolean operators
- Prompt for variable inputs
- Queries can be run in batch mode
- Save queries

Display and Distribute Query Results

- View reports on screen
- Print reports
- Convert the data to display as charts
- Copy query result data into Microsoft Office tools
- Extend reporting capability with third party reporting tools
- Export query result data as HTML or XML
- Import query result data into Microsoft Access
- Import query result data into Microsoft SQL Server Reporting Services (SSRS)

Rapid Application Development

- Point-and-click creation of a reporting application
- Package multiple queries into a single application
- Customized menu bar
- Centralized help text

Server Platforms

- Windows servers
- IBM i servers
- Linux servers

Client Platforms

- Windows 8.1 Pro
- Windows 10

Visit www.lansa.com for more information

THE AMERICAS

Headquarters – Chicago, USA
Tel: +1 630 874 7000
Email: info@lansa.com

EUROPE

Headquarters – London, UK
Tel: +44 1727 790300
Email: info@lansa.co.uk

ASIA PACIFIC

Headquarters – Sydney, Australia
Tel: +61 2 8907 0200
Email: info@lansa.com.au

LANS A